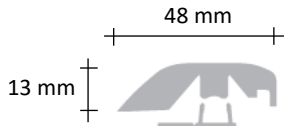


SmartFinish®

INCIZO® PROFILE 4 IN 1



Product description

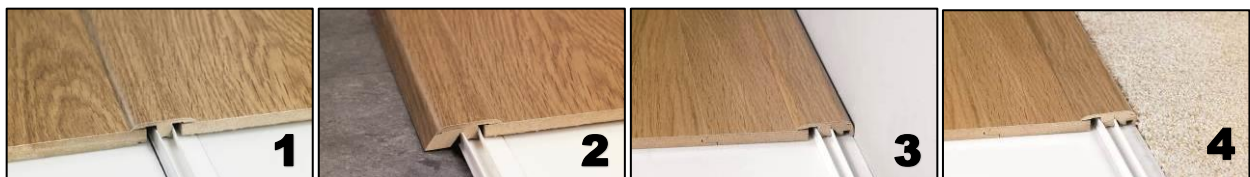
1
PROFILE
PROFILÉ - PROFIEL
PROFIL - PERFIL

The profile with Incizo® technology provides a simple solution for a perfect finish to your floor. You can create any profile imaginable with the knife supplied: expansion profile, adapter profile, transition profile and also an edge profile.

4
APPLICATIONS
APPLICATIENS
TOEPASSINGEN
ANWENDUNGS -
MÖGLICHKEITEN
APLICACIONES

The Incizo® profile provides a handy and economic solution.

Contents: Incizo® profile, multifunctional rail and handy knife.



Specifications

- **Ordering code**
SFINCP(-) followed by the design number of your profile (5 characters)
- **Dimensions**
1 piece = 2150 x 48 x 13 mm
- **Packing quantities**

1 piece per packaging (cutting knife + rail included)

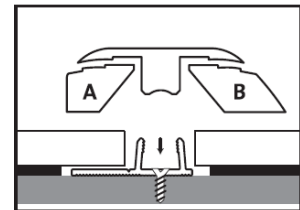
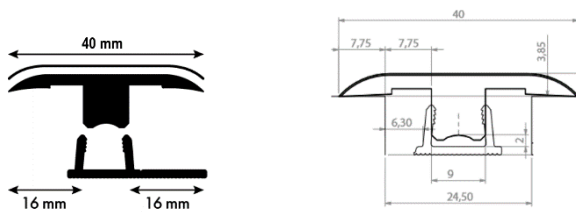
- PEFC certified



Instructions for use

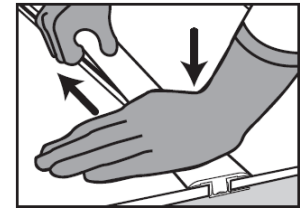
1) Expansion profile

An expansion profile is used to join two floors in: doorways, door openings, L-shaped rooms or rooms where the floor is greater in distance than 12 m in length or width.



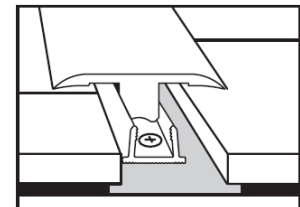
Saw the profile to the right length. Cut away section A and section B with the knife to make the expansion profile.

Note: cut both lengths first and then remove both blocks.

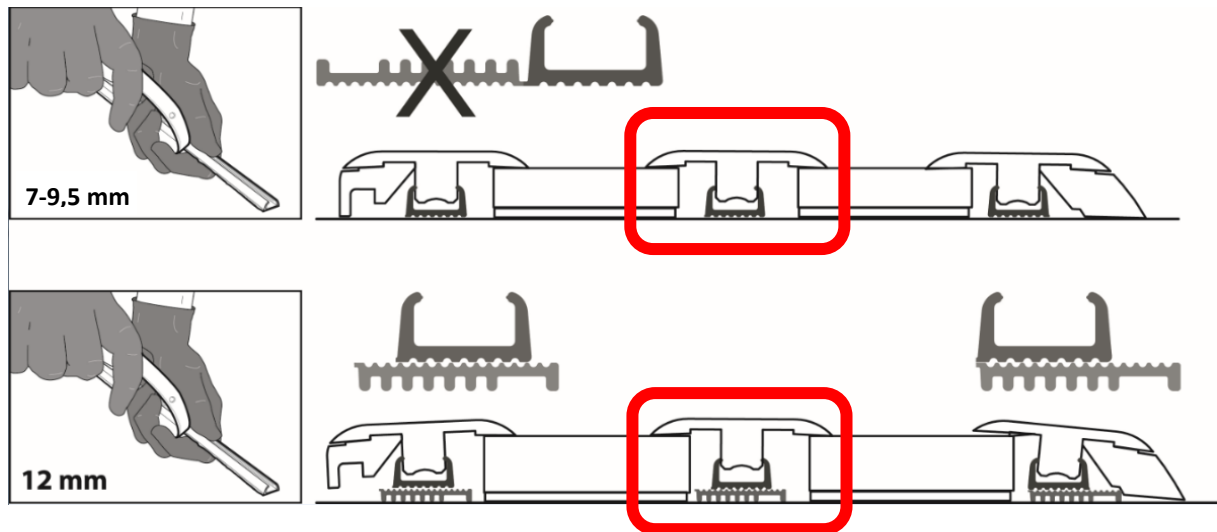


Remove any unevenness on the edges of the profile by moving the side of the slit (sandpaper) along the profile.

Make sure you leave enough room between the two surfaces that link the profile when installing the floor. Take into account the expansion joint between the protruding legs of the rail (where the profile will go) and the floor. Saw the plastic rail to the right length and place it centrally on the base in the open space between the two floor surfaces. The rail can be attached in different ways: see further Press the profile gently from one side to the other into the rail. Press until it is against the floor.

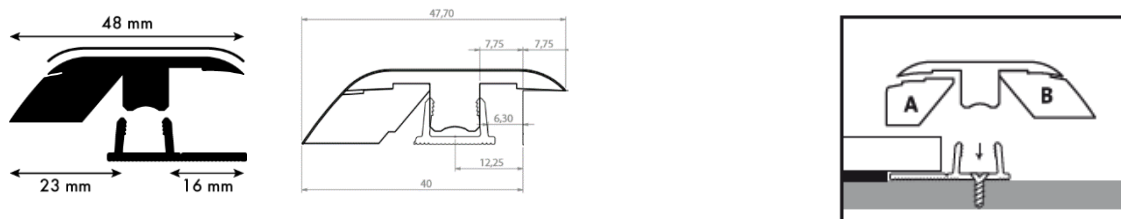


! Incizo with **black** subprofile:



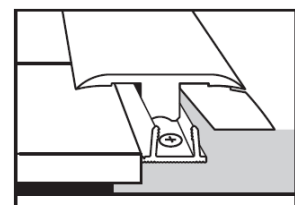
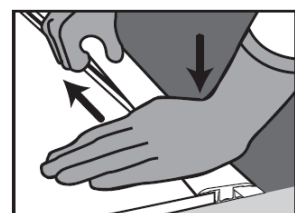
2) Adapter profile

An adapter profile ensures a smooth transition from a laminate floor to an alternative floor covering at a lower height, like tiles, vinyl or parquet.

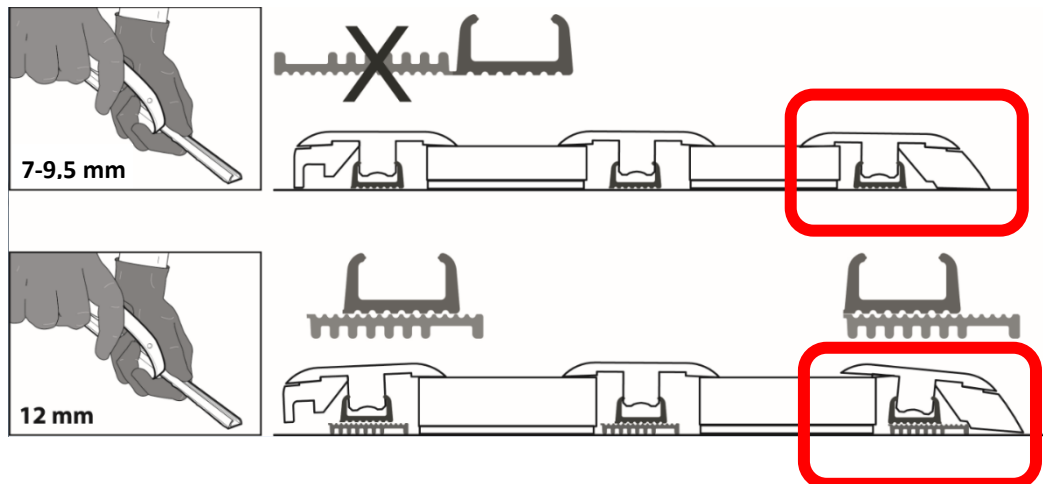


First saw the profile to the right length. Cut section A away with the knife to make an adapter profile. Remove any unevenness on the edge of the profile by moving the side of the slitter (sandpaper) along the profile.

Mark on the base where you want the floor to go. Let the base continue to just before this line: it is better to place the rail (in which the adapter profile will be clamped) on the base later. Make sure that you lay the floor a sufficient distance away from the edge of the underlay: take into account the expansion joint between the protruding legs of the rail (where the profile will go) and the floor. Attach the plastic rail to the base, with the long lip in the direction of the floor. This can be done in various ways: see further. Press the profile gently from one side to the other in the rail. Press until it is against the floor.



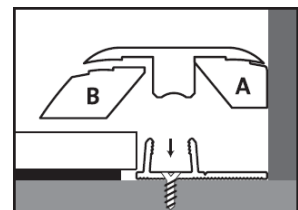
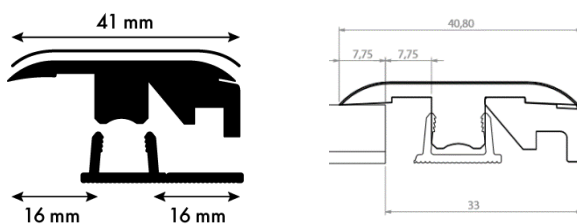
! Incizo with **black** subprofile:



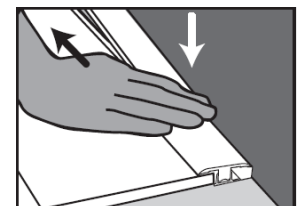
3) End profile & 4) Transition profile

An end profile is used to finish the edge of a floor against a vertical surface such as sliding doors, low open windows, a slightly higher doorstep or tiled floor.

A transition profile can be used to cover the transition to a fixed carpet, for example.

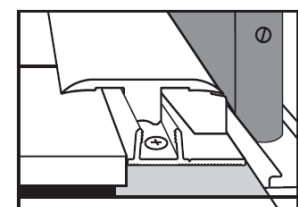


First saw the profile to the right length. Cut section B away with the knife to make an edge profile. Remove any unevenness on the edge of the profile by moving the side of the slit (sandpaper) along the profile.

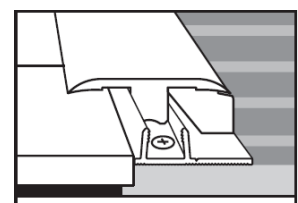


Installing against a vertical surface:

Saw the plastic rail to the right length and place it with the lip against the vertical surface, on the base.



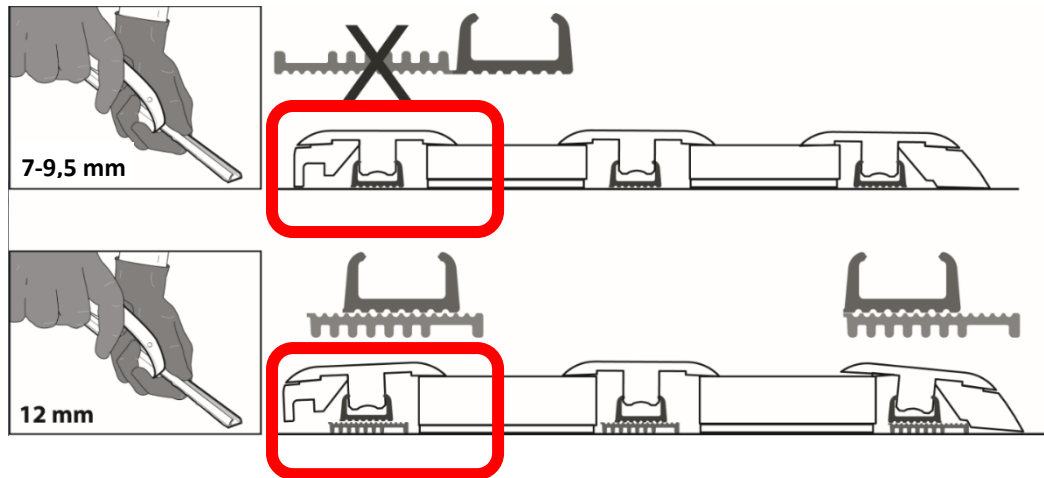
The lip acts as a distance-holder. Attaching the rail: see further. Make sure there is a sufficient expansion joint between the floor and the legs of the rail in which the profile will be clamped. Press the profile gently from one side to the other in the rail. Press until it is against the floor.



Installing against a horizontal surface:

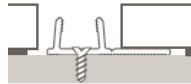
Identical to the installing of the adapter profile.

! Incizo with **black** subprofile:



Installation of the multifunctional rail

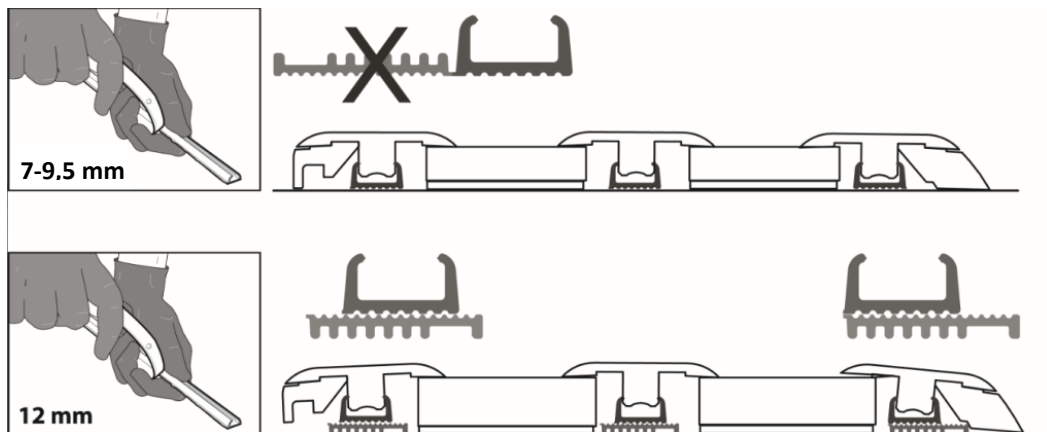
- Normal installation :
- Installation with considerable height differences



For installing floors thicker than 9mm floors. Break off the long lip from the rail at the groove, across the whole length of the rail. Place the broken off piece under the rail to make up for the height difference with the floor. Attach both pieces firmly to the ground.



- ! Incizo with **black** subprofile:



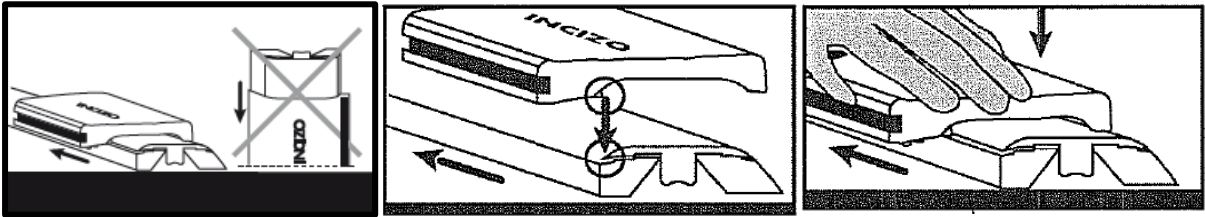
⇒ **How to attach ?**

- With screws:
The rail can be attached to the base with screws. Use the pre-drilled holes between the legs of the rail for this. Be careful with underground pipes.
- Or with glue. Verify if the glue you use sticks well to the subprofile and to the subfloor.

Using the knife

BE CAREFUL:

the edges of the cut profile and the knife are sharp, always wear gloves.

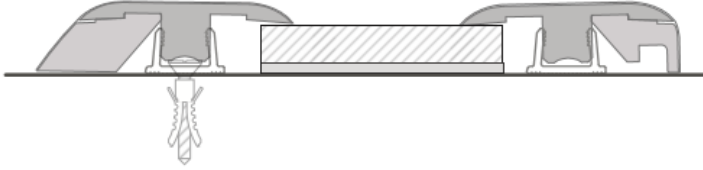


Always place the profile horizontally on a stable base when cutting.

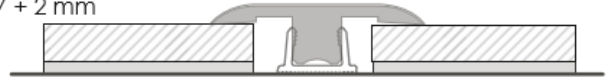
Place the slitter at the top of the profile so that the knife below the slitter goes in the narrow opening on the head of the profile.

When cutting the slitter, always keep the profile pressed level and pull it over the profile in the direction of the arrow.

7 + 2 mm



7 + 2 mm



8 + 2 mm



8 + 2 mm



9,5 + 3 mm

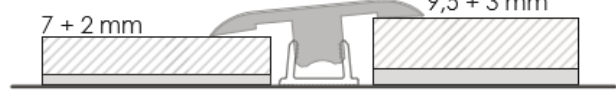


9,5 + 3 mm

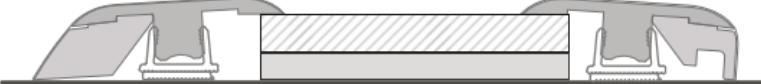


7 + 2 mm

9,5 + 3 mm



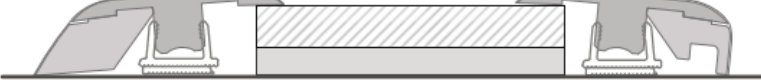
7 + 5 mm



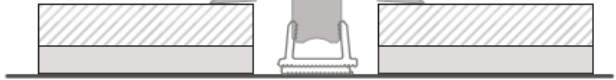
7 + 5 mm



8 + 5 mm



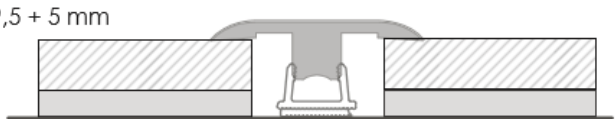
8 + 5 mm



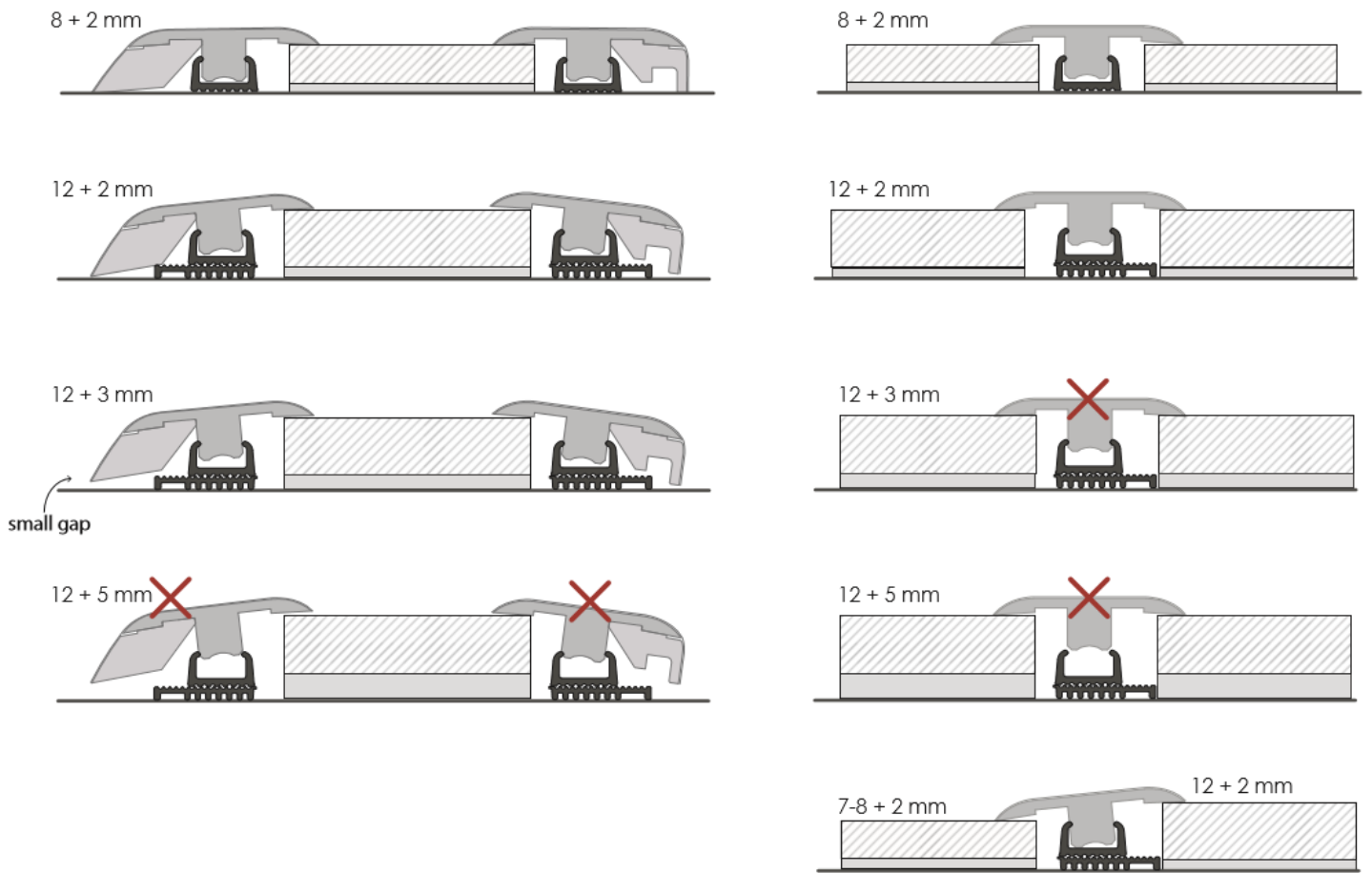
9,5 + 5 mm



9,5 + 5 mm



Black subprofile



LAMINATE - LVT

